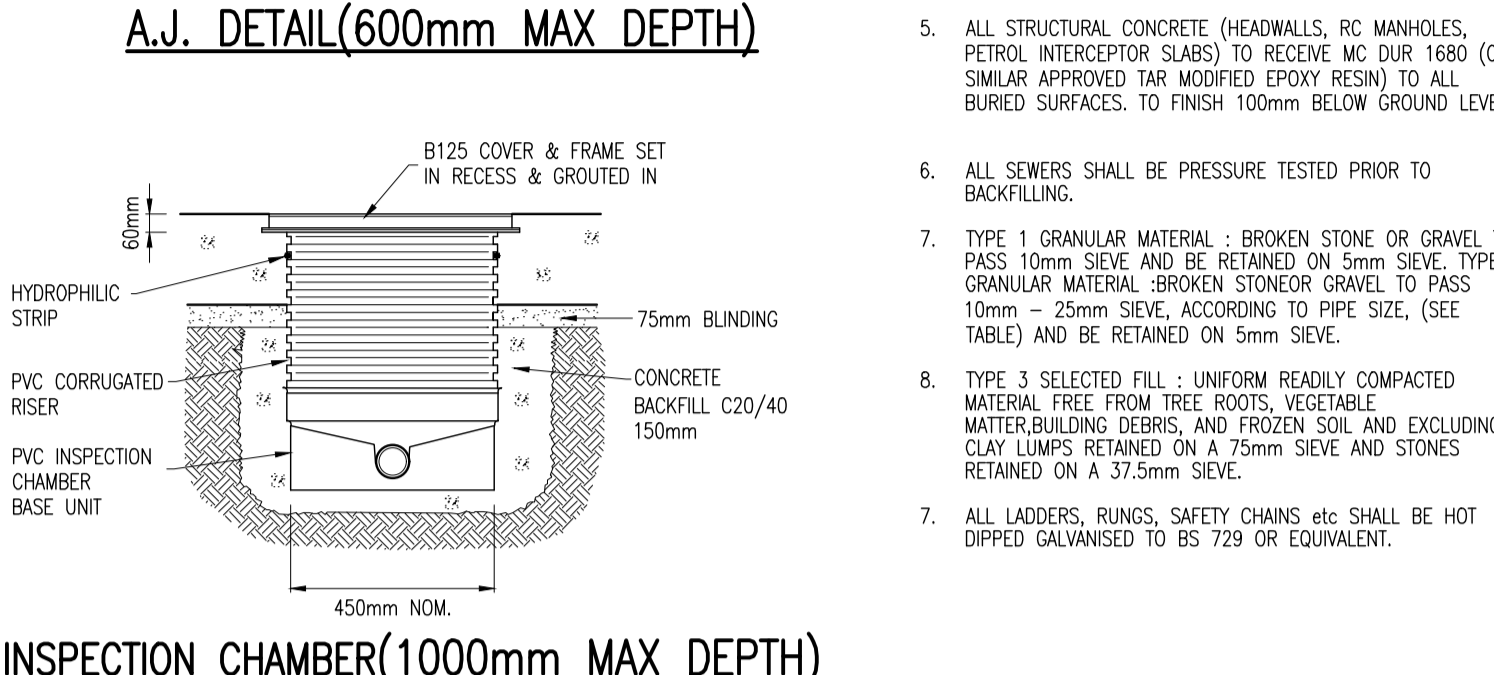
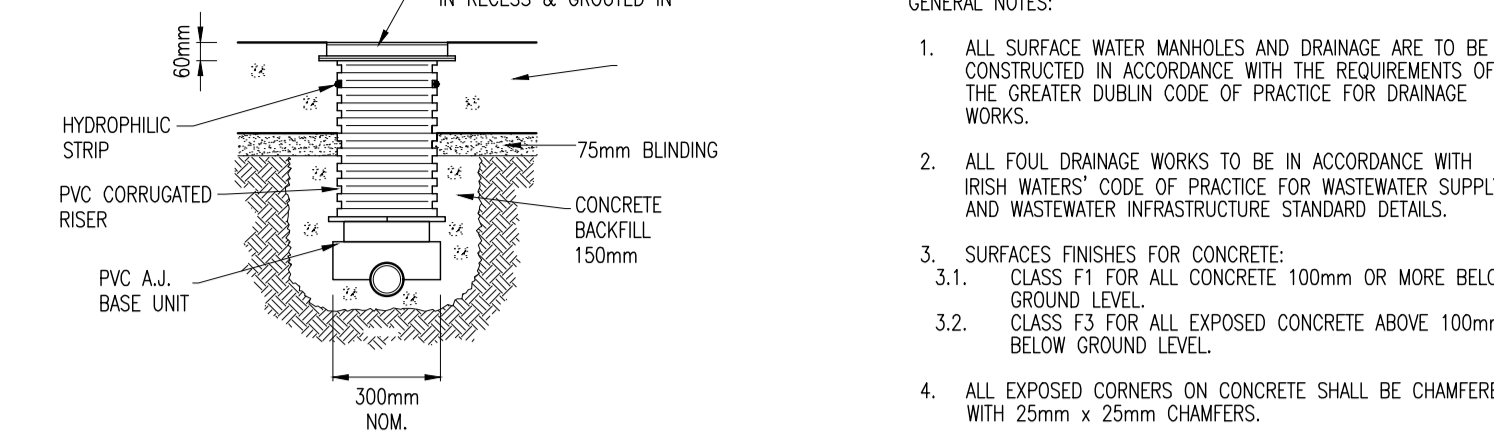
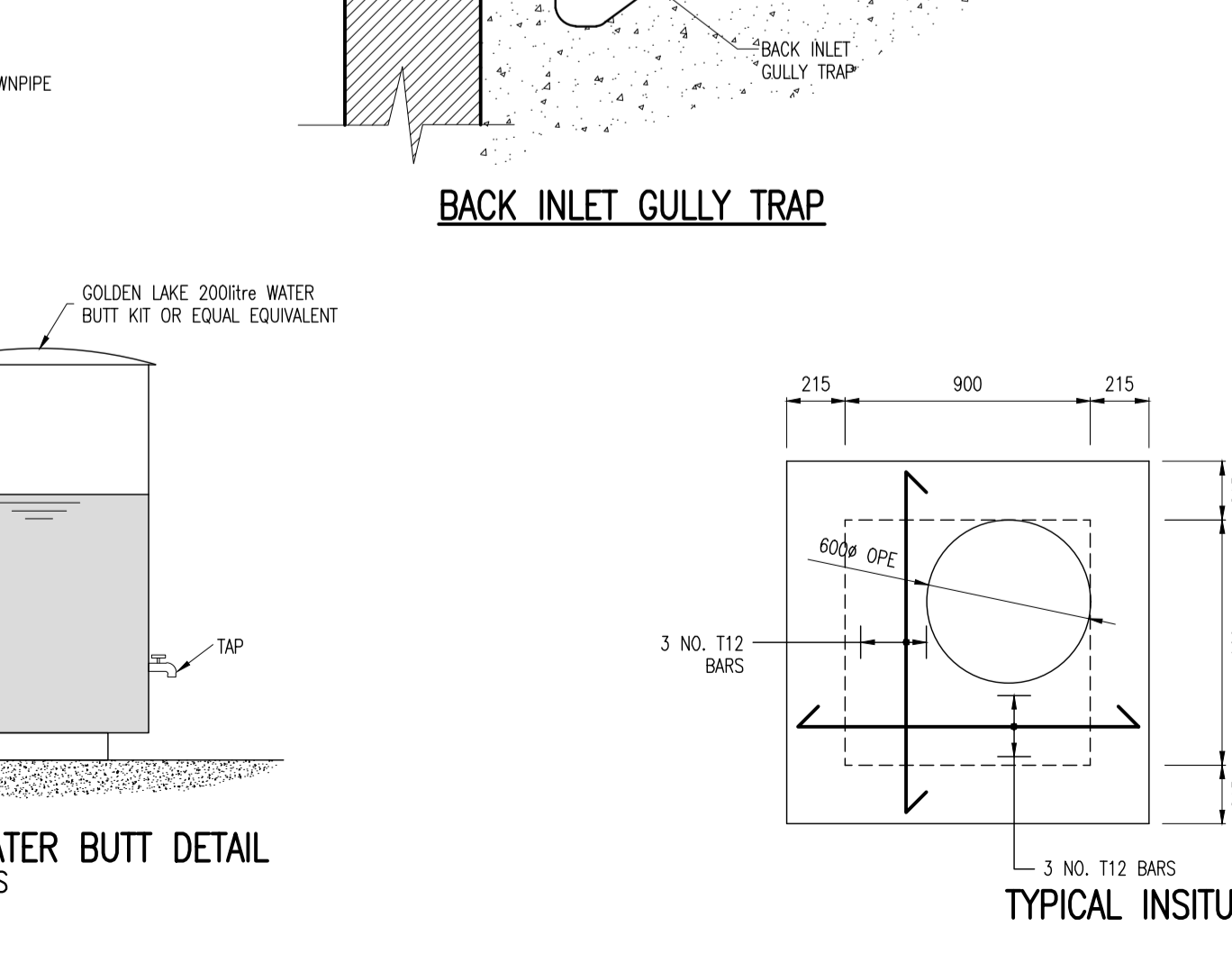
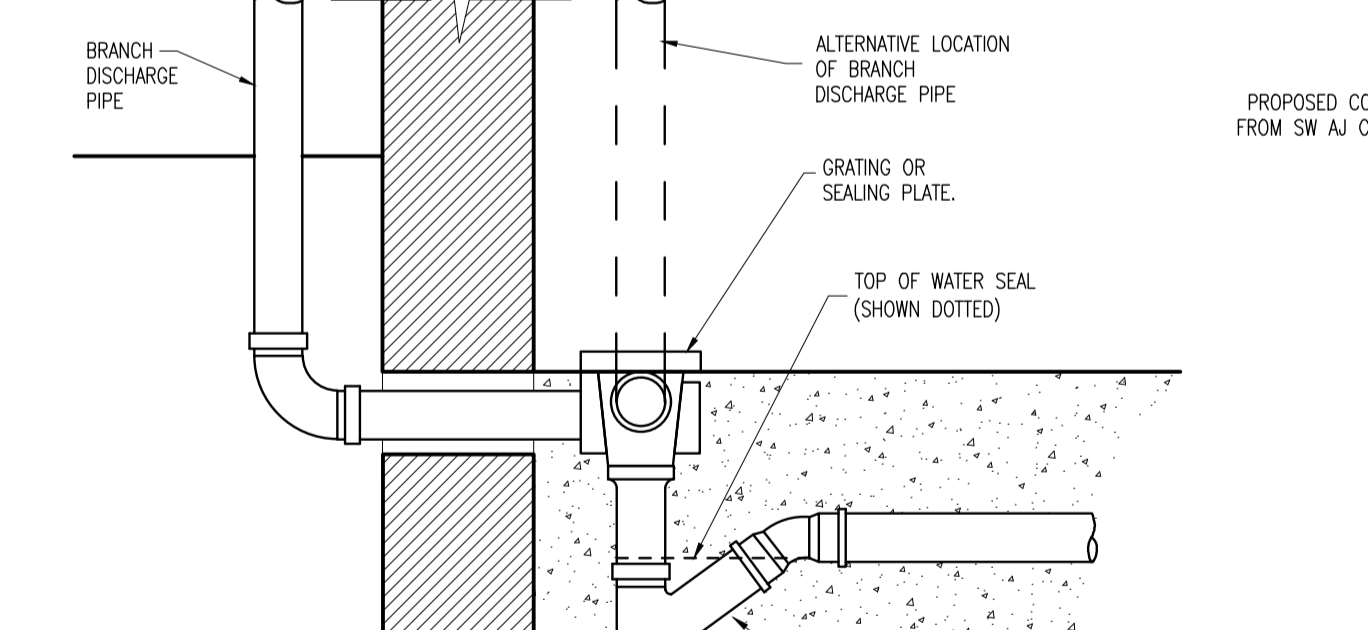
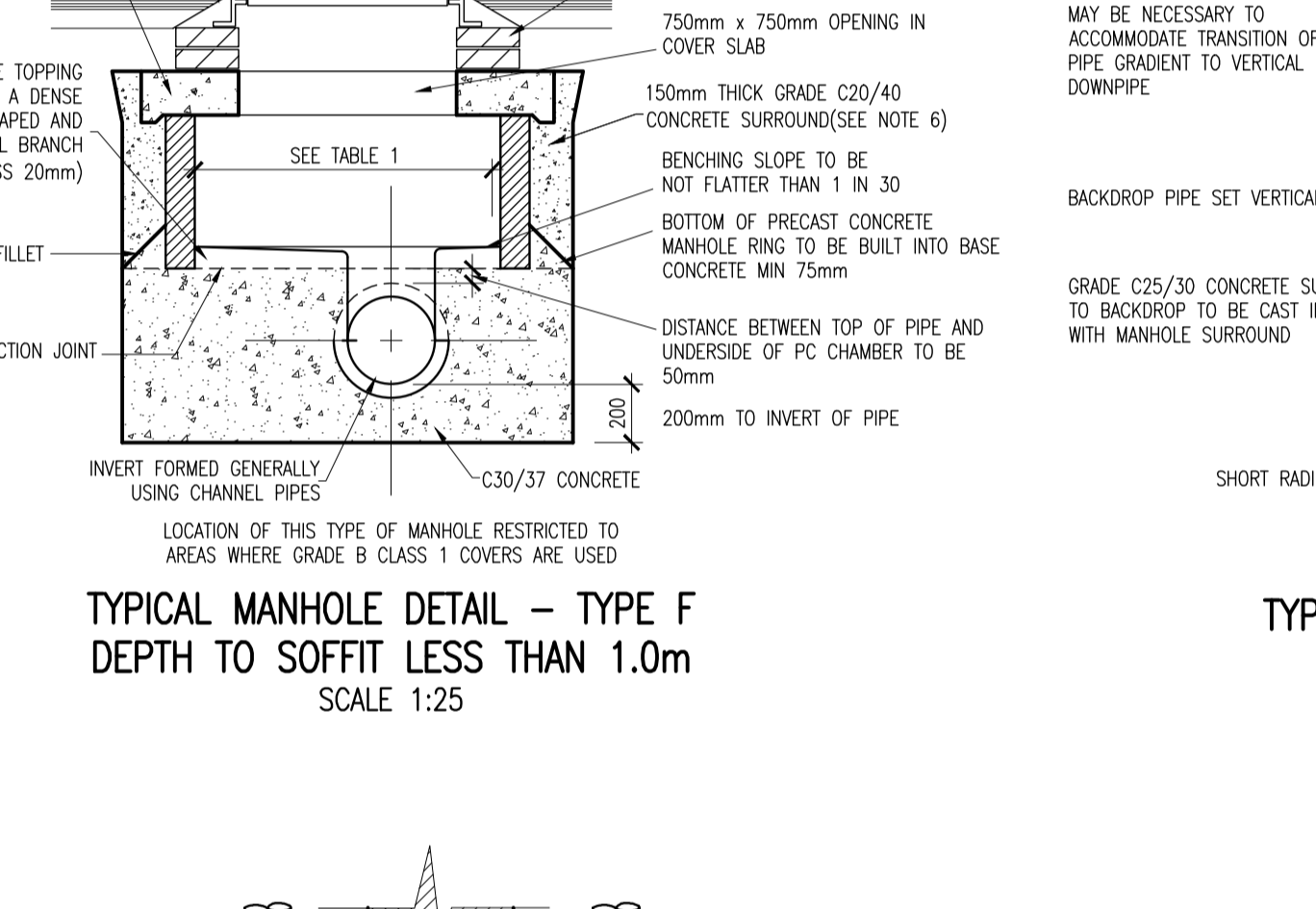
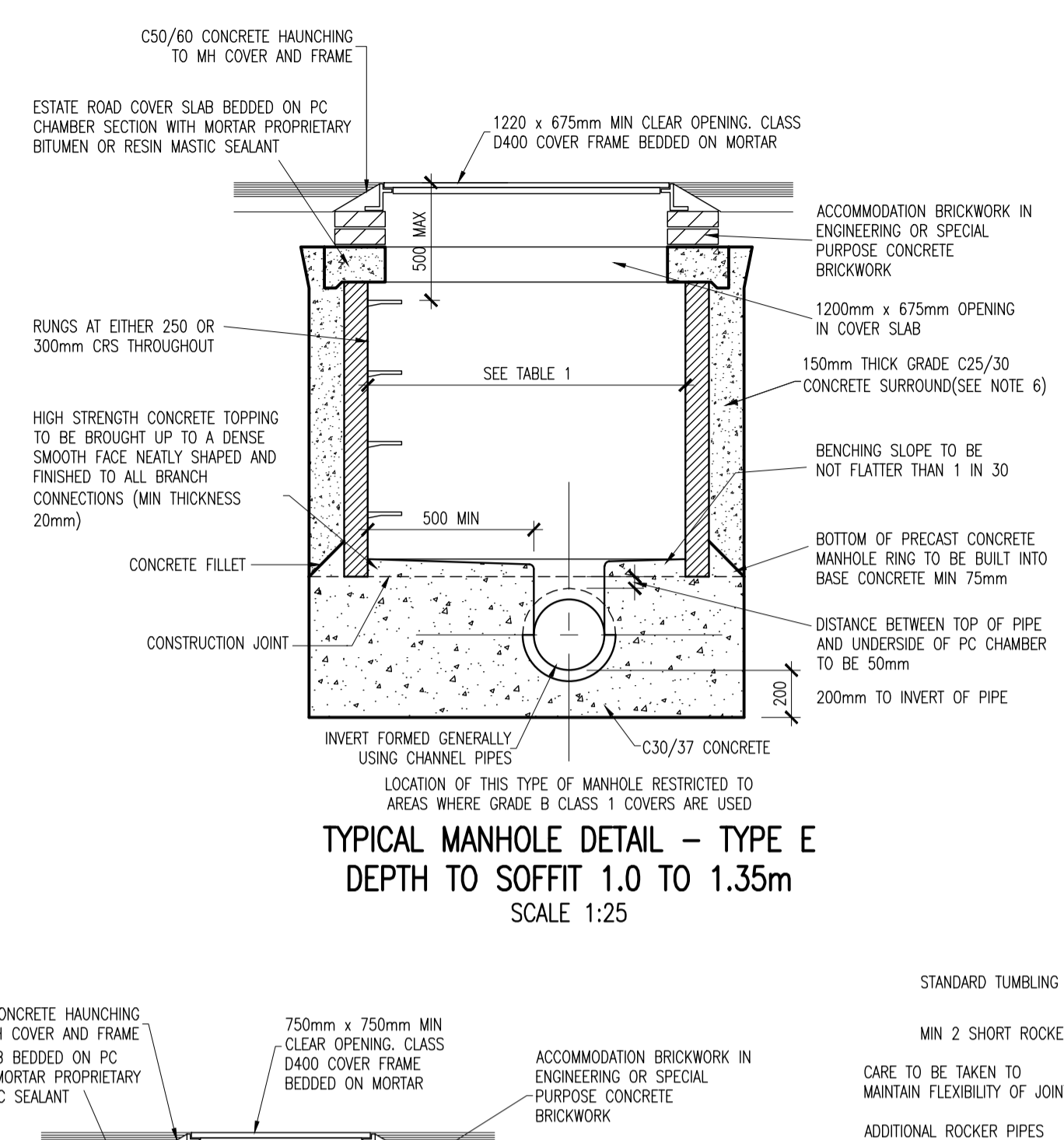
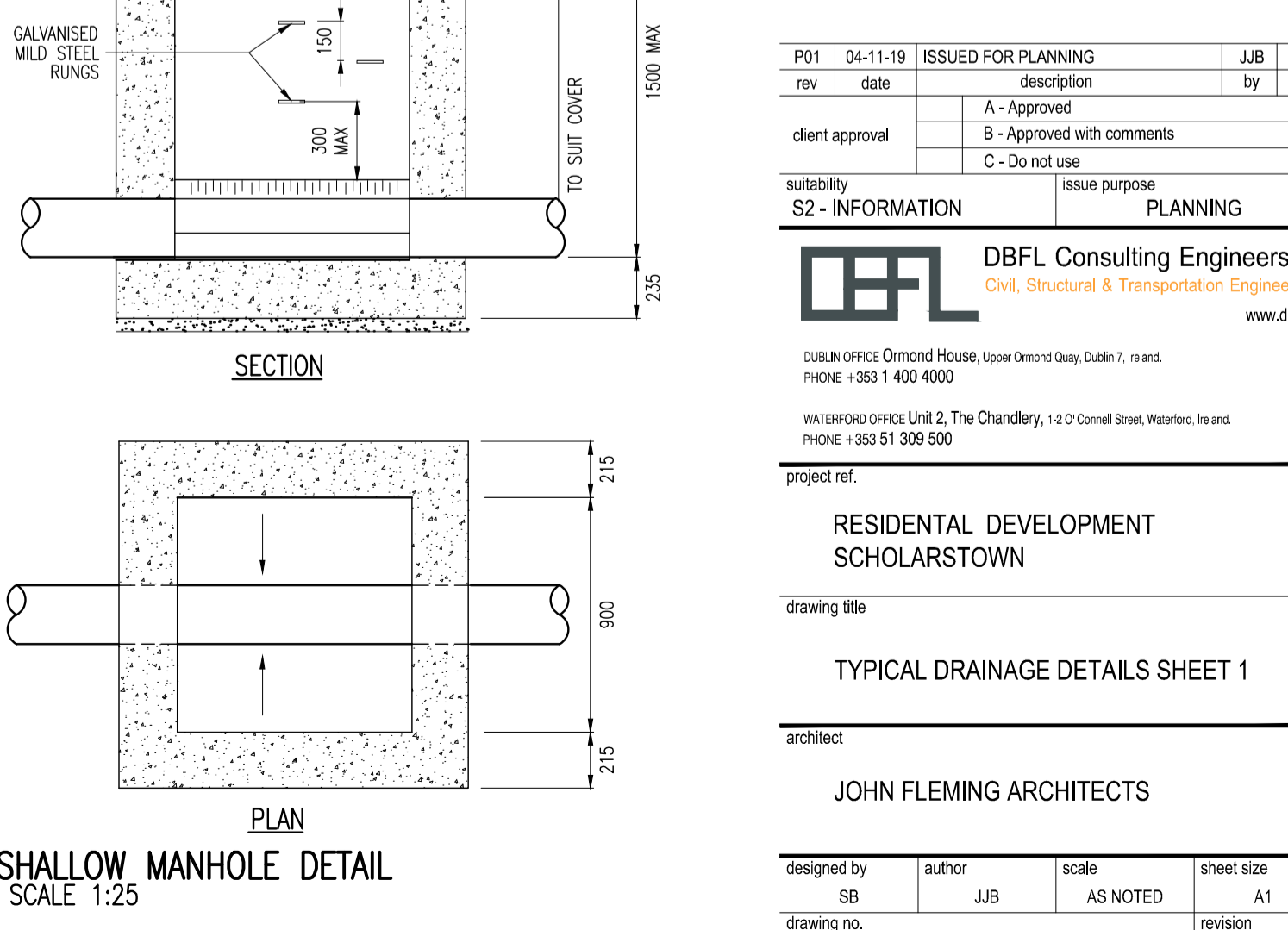
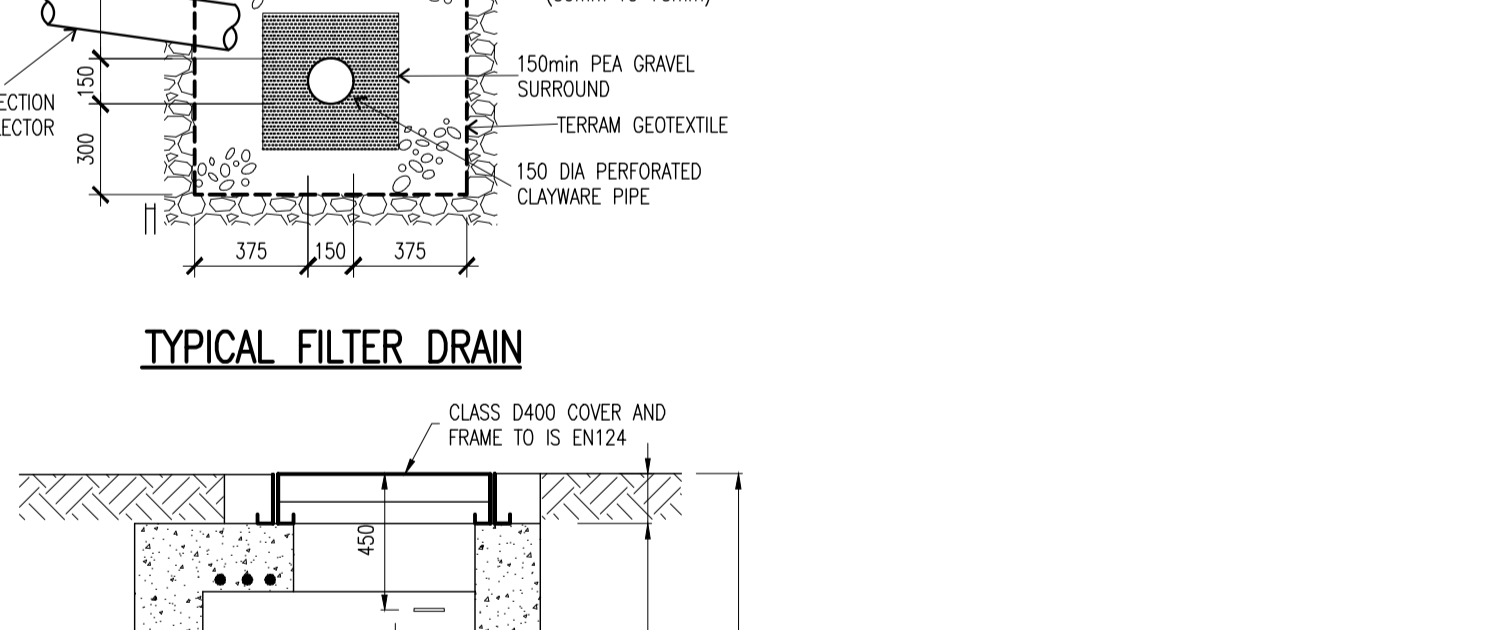
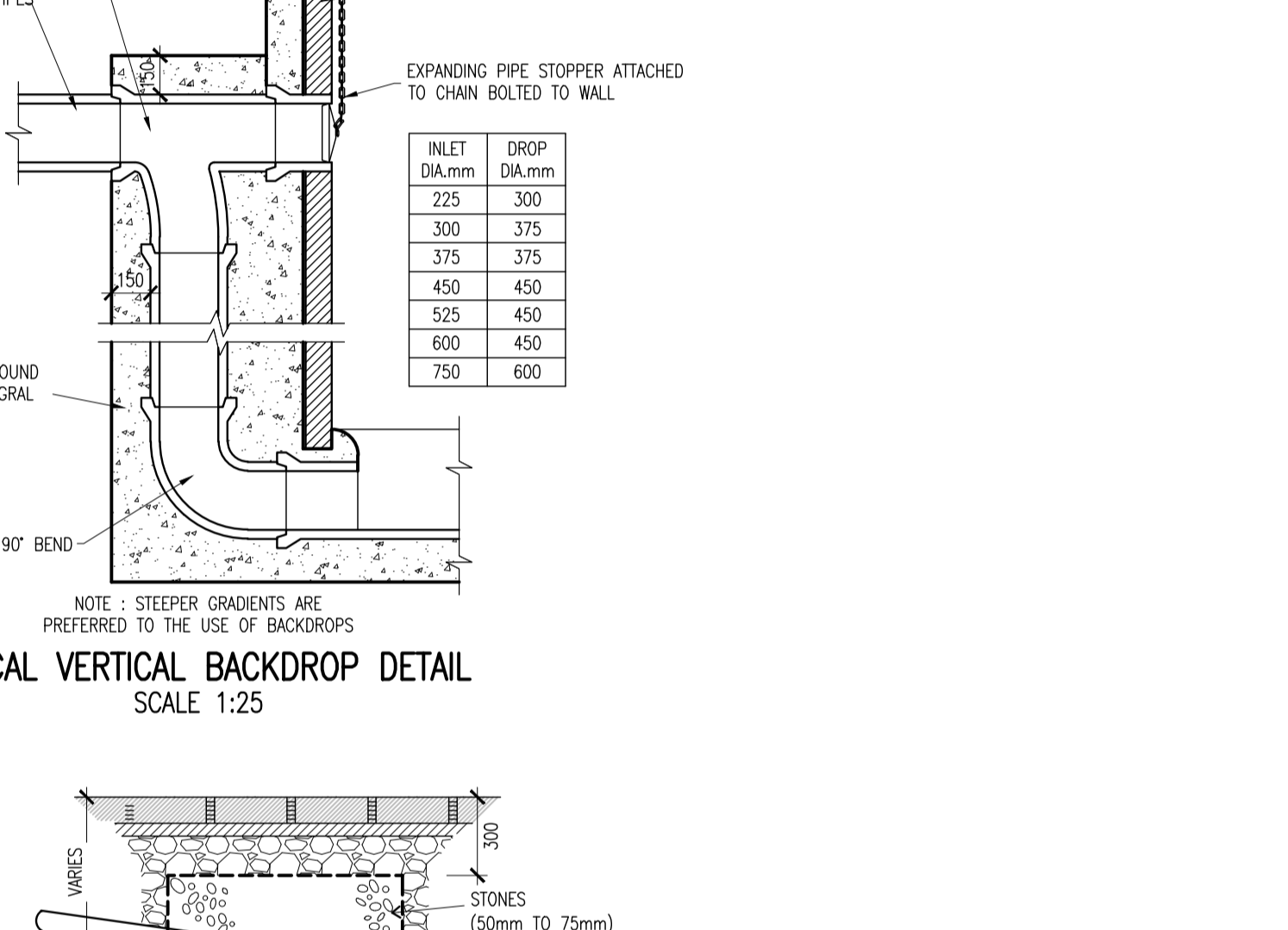


Diameter of Largest Pipe in Manhole (mm)	Chamber Section Diameter (mm)
Less than 375	1200
375 - 450	1350
500 - 700	1500
750 - 900	1800
> 750	PIPE SIZE + 1.3m

Drawing Ref	Title
STD-W-01	Water Service Connection Responsibility
STD-W-03	Customer Connection and Boundary Box (25mm OD Pipe)
STD-W-04	General pipe connections (sheet 1 of 7)
STD-W-05	General pipe connections (sheet 2 of 7)
STD-W-06	General pipe connections (sheet 3 of 7)
STD-W-07	General pipe connections (sheet 4 of 7)
STD-W-08	General pipe connections (sheet 5 of 7)
STD-W-09	General pipe connections (sheet 6 of 7)
STD-W-10	General pipe connections (sheet 7 of 7)
STD-W-11	Typical service layout indicating separation distances
STD-W-12	Restrictions on trees / shrubs planting adjacent to watermains
STD-W-13	Trench backfill & bedding
STD-W-14	Sluice valve for ductile iron (D.I.) pipe (<350mm dia.) (sheet 1 of 2)
STD-W-15	Sluice valve for polyethylene (P.E.) pipe (<350mm dia.) (sheet 2 of 2)
STD-W-18	On-line hydrant for polyethylene (P.E.) pipe (sheet 3 of 4)
STD-W-19	Off-line hydrant for polyethylene (P.E.) pipe (sheet 4 of 4)
STD-W-26	Meter chamber (≤300mm dia.)
STD-W-27	Marker posts / plates
STD-W-28	Water main thrust & support blocks
STD-W-35	Pipe Repair to Existing Mains
STD-W-36	Telemetry and Wet Kiosk



TYPE 2 GRANULAR MATERIAL :	100% PASSING
UP TO 225mm	10mm SIEVE
225 TO 450mm	20mm SIEVE
ABOVE 450mm	25mm SIEVE



- GENERAL NOTES:
- ALL SURFACE WATER MANHOLES AND DRAINAGE ARE TO BE CONSTRUCTED IN ACCORDANCE WITH THE REQUIREMENTS OF THE GREATER DUBLIN CODE OF PRACTICE FOR DRAINAGE WORKS.
 - ALL FOLI DRAINAGE WORKS TO BE IN ACCORDANCE WITH IRISH WATERS' CODE OF PRACTICE FOR WASTEWATER SUPPLY AND WASTEWATER INFRASTRUCTURE STANDARD DETAILS.
 - SURFACES FINISHES FOR CONCRETE:
 - CLASS F1 FOR ALL CONCRETE 100mm OR MORE BELOW GROUND LEVEL.
 - CLASS F3 FOR ALL EXPOSED CONCRETE ABOVE 100mm BELOW GROUND LEVEL.
 - ALL EXPOSED CORNERS ON CONCRETE SHALL BE CHAMFERED WITH 25mm x 25mm CHAMFERS.
 - ALL STRUCTURAL CONCRETE (HEADWALLS, RC MANHOLES, PETROL INTERCEPTOR SLABS) TO RECEIVE MC DUR 1680 (OR SIMILAR APPROVED TAR MODIFIED EPOXY RESIN) TO ALL BURIED SURFACES. TO FINISH 100mm BELOW GROUND LEVEL.
 - ALL SEWERS SHALL BE PRESSURE TESTED PRIOR TO BACKFILLING.
 - TYPE 1 GRANULAR MATERIAL : BROKEN STONE OR GRAVEL TO PASS 10mm SIEVE AND BE RETAINED ON 5mm SIEVE. TYPE 2 GRANULAR MATERIAL -BROKEN STONOR GRAVEL TO PASS 10mm - 25mm SIEVE, ACCORDING TO PIPE SIZE, (SEE TABLE) AND BE RETAINED ON 5mm SIEVE.
 - TYPE 3 SELECTED FILL - UNIFORM READILY COMPACTED MATERIAL FREE FROM TREE ROOTS, VEGETABLE MATTER,BUILDING DEBRIS, AND FROZEN SOIL AND EXCLUDING CLAY LUMPS RETAINED ON A 75mm SIEVE AND STONES RETAINED ON A 37.5mm SIEVE.
 - ALL LADDERS, RUNGS, SAFETY CHAINS etc SHALL BE HOT DIPPED GALVANISED TO BS 729 OR EQUIVALENT.

TYPE 2 GRANULAR MATERIAL :	100% PASSING
UP TO 225mm	10mm SIEVE
225 TO 450mm	20mm SIEVE
ABOVE 450mm	25mm SIEVE

P01	04-11-19	ISSUED FOR PLANNING	JJB	BK
rev	date	description	by	chkd.
		A - Approved		
		B - Approved with comments		
		C - Do not use		
client approval				
suitability		issue purpose		
S2 - INFORMATION		PLANNING		

DBFL Consulting Engineers
Civil, Structural & Transportation Engineering
www.dbfl.ie

DUBLIN OFFICE Ormond House, Upper Ormond Quay, Dublin 7, Ireland
PHONE +353 1 400 4000

WATERFORD OFFICE Unit 2, The Chandlers, 1-2 O'Connell Street, Waterford, Ireland
PHONE +353 51 309 500

project ref.

RESIDENTIAL DEVELOPMENT
SCHOLARSTOWN

drawing title

TYPICAL DRAINAGE DETAILS SHEET 1

architect

JOHN FLEMING ARCHITECTS

designed by	author	scale	sheet size
SB	JJB	AS NOTED	A1
drawing no.		revision	
SCH-DBF-ZZ-XX-DR-C-3110		P01	